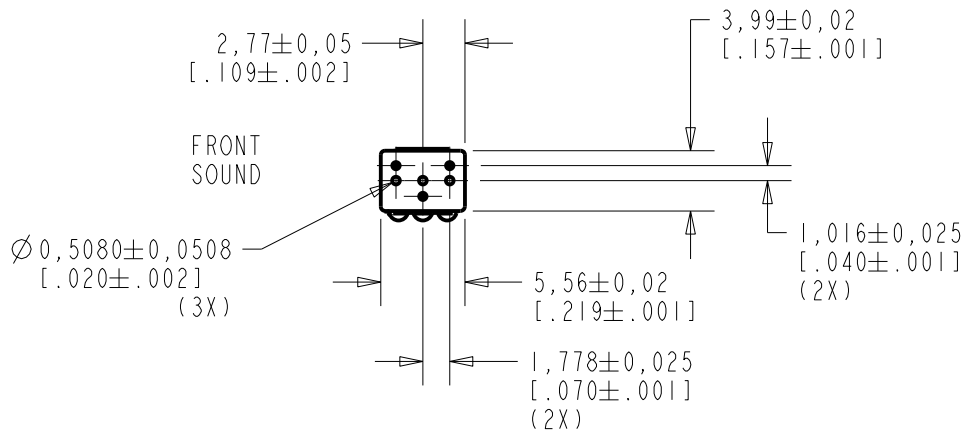
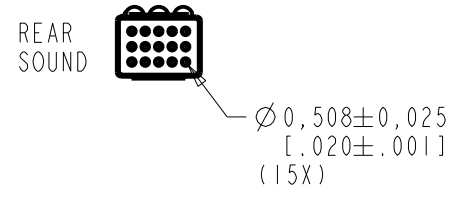
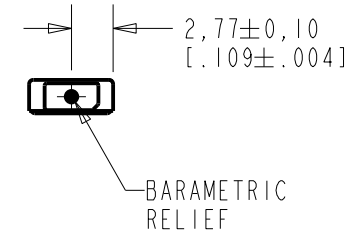
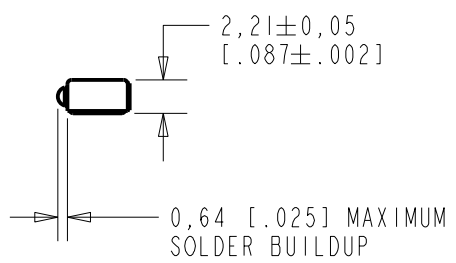
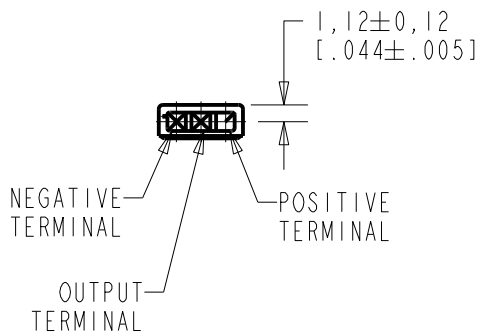


WP-25393-000
SHT 1.1



NOTE:

1. INCREASED PRESSURE AT THE FRONT SOUND INLET CAUSES A POSITIVE GOING VOLTAGE TO APPEAR AT THE OUTPUT TERMINAL, RELATIVE TO THE NEGATIVE TERMINAL.



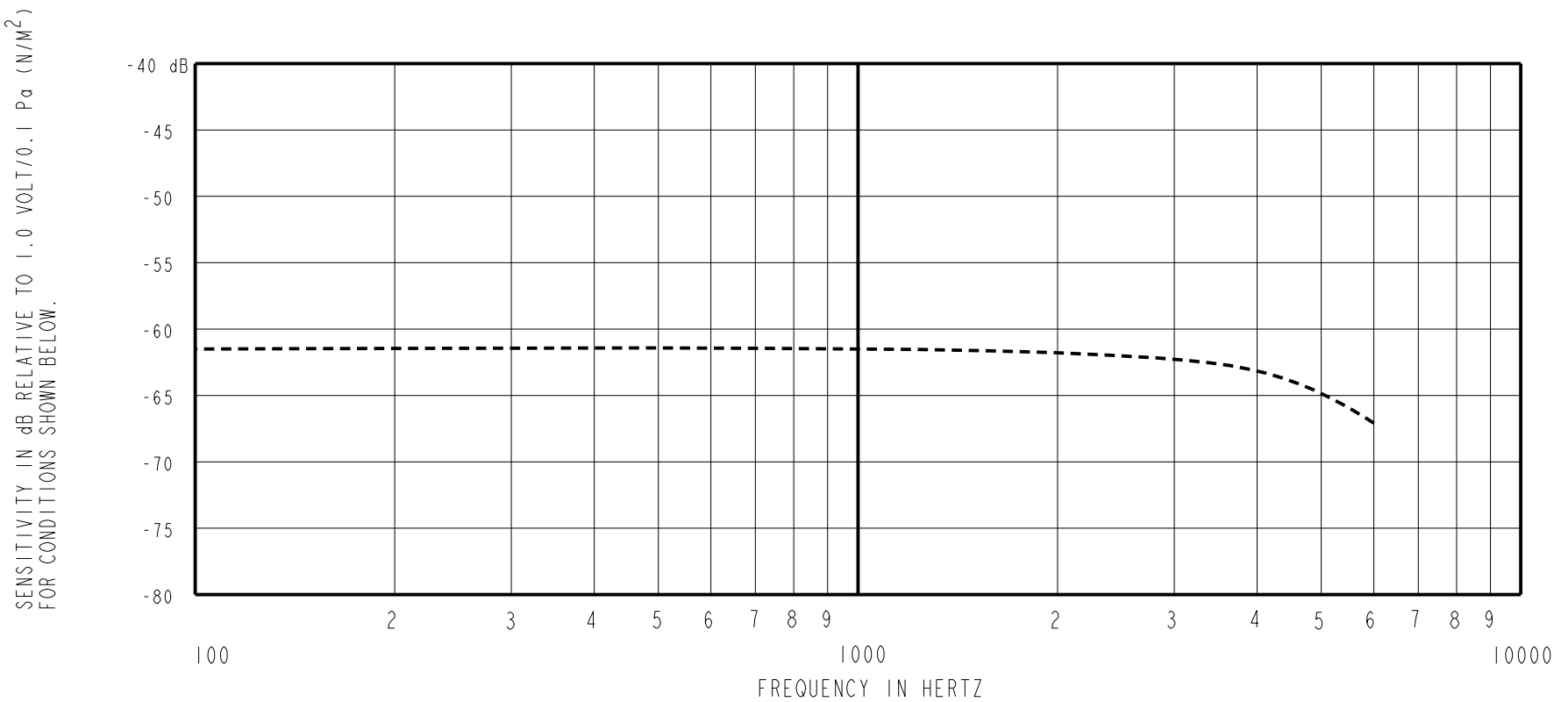
NOMINAL WEIGHT
.13 GRAM

DIMENSIONS IN MILLIMETERS [INCHES]

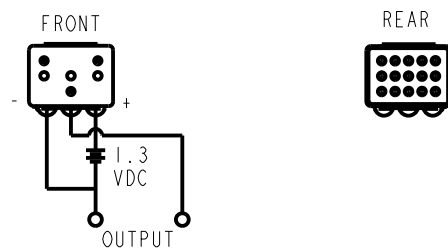
Revision	C.O. #	Implementation Date	RELEASE LEVEL	REVISION
B	MI0104515	3-21-12	Active	B
A	MI0103694	6-22-10		

SCALE: 2:1		DR. BY	DATE
DO NOT SCALE DRAWING		CW	6-22-10
TITLE: MICROPHONE		GJP	6-28-10
OUTLINE DRAWING		APP. BY	DATE
WP-25393-000		GJP	6-28-10
SHT 1.1			

KNOWLES ELECTRONICS
ITASCA, ILLINOIS U.S.A.



SENSITIVITY				DEVICE CONFORMITY	
FREQUENCY	MIN.	NOM.	MAX.	RANGE OF DEVIATION FROM 1KHz	
100	---	-61.5	---	-3.0	+3.0
1000	-64.5	-61.5	-58.5	0.0	0.0
4000	---	---	---	-2.0	+4.0



NOTES:

- CASE CONNECTED TO NEGATIVE TERMINAL.
- MICROPHONE TO BE FUNCTIONAL WITH 10 VDC SUPPLY.
- SENSITIVITY VALUES INDICATED ON THIS SPECIFICATION ARE VALID AT 50% HUMIDITY.
- PRESSURE DIFFERENCE SENSITIVITY TESTED WITH REAR SOUND PORT SEALED TO AIR VOLUME OF AT LEAST 0.5 CC.
- MICROPHONE WILL SURVIVE SUBMERSION IN 3M OF WATER.
- CAPACITANCE MEASUREMENT MADE WITH BOONTON MODEL 7200 OR EQUIVALENT WITH APPLIED AC VOLTAGE OF 15 mVOLTS AT 1 MHz AND 0 VDC. INCLUDES CIRCUIT CAPACITANCE IN PARALLEL WITH CAPACITOR.

PORT LOCATION	DC SUPPLY	AMPLIFIER CURRENT DRAIN	OUTPUT IMPEDANCE OHMS			CAPACITANCE ±50%		
			MIN.	NOM.	MAX.	OUTPUT TO NEGATIVE	OUTPUT TO POSITIVE	POS. TO NEGATIVE
KA/JA	1.3V	50uA MAX.	2800	4400	6800	75pF	75pF	N/A

Revision	C.O. #	Implementation Date	RELEASE LEVEL	REVISION
B	M10104515	3-21-12	Active	B
A	M10103694	6-22-10		

WHEN TEST LIMITS ARE USED TO ESTABLISH INCOMING INSPECTION ACCEPTANCE/REJECTION CRITERIA, CORRELATION OF TEST EQUIPMENT WITH KNOWLES IS ALSO REQUIRED FOR ELIMINATION OF EQUIPMENT AND TEST METHOD VARIATION

DR. BY	DATE
CW	6-22-10
CK. BY	DATE
GJP	6-28-10
APP. BY	DATE
GJP	6-28-10

TITLE:	MICROPHONE	WP-25393-000
	PERFORMANCE SPECIFICATION	SHT 2.1

KNOWLES ELECTRONICS
ITASCA, ILLINOIS U.S.A.